

Redbrook C of E Primary School Newsletter

Striving Together To Be The Best We Can Be



No. 77, 28th May 2021

Dear Families,

Our federation vision sits at the heart of everything we do in school and you may recognise our tag line *'Striving Together To Be The Best We Can Be'*. This term we have been revisiting this with our classes and during worship, exploring what it means for the children in school and beyond. There has been much focus on how we strive together to achieve things at home and in our learning that we find difficult, with all of the children reflecting on this personally.

Did you know that this tag line is actually embedded in our wider vision? ***'Our Federation is a safe place where we embrace and enjoy challenge, take ownership of our own learning, collaborate and support each other, whilst striving together to be the best we can be.'*** As staff and governors we too have been revisiting what this means for us in our work in school. It has been a meaningful time as we have all focused on the heartbeat of our federation and worked together.

As a Church of England federation, our vision is underpinned by John 10:10 *"I have come that they may have life and have it to the full."* This passage from the bible reminds us of how we, as educators, want the very best for your children, to enable them to learn so that they are ready for life beyond our school both in its joys and in its challenges.

As such, during our inset day on Monday 7th June we will be taking our vision and our toolkit of values: *'Courage, Compassion, Resilience, Respect'* and using it to plan our curriculum for the next academic year. After a long period of time where Covid has challenged and disrupted everything we do, we are starting to see exciting times ahead as our vision guides us to achieve the very best we can for you all.

Wishing you all a wonderful half term break.

Natalie Frey
Executive Deputy Head Teacher

Attendance

It has been great to see you all back since Easter. We have had several days with every child in school, full attendance, well done all! We would appreciate it if wherever possible you book any medical or dentists appointments out of school hours. It is especially important at the moment to have children in school as much as they are able, as we have already missed so much due to lockdowns.

Courage Compassion Respect Resilience

www.wyeforestfederation.co.uk

parentview.ofsted.gov.uk

Thank You



We have a beautiful new outdoor classroom! Many thanks to Chris Powell for helping to organise the installation and clearing of playground (and thank you to the commune who took the climbing frame for us).

Thank you also to FORS who have made a donation towards some new storage boxes for our raised outdoor area.



Many thanks also to Miss Taylor for making our outside garden area look cheerful. Mr Gazzard has also come up with a planting plan, watch this space!



Courage Compassion Respect Resilience

www.wyeforestfederation.co.uk

parentview.ofsted.gov.uk

FORS news

Art workshop

Friends of Redbrook School (FORS) plan to celebrate our newly defined school vision by funding an art project led by local artist Claudia Peake (right). The workshop will take place in late June with all of the children and the outcome will be a new art installation for the playground.



Get spotted!

FORS are collaborating with village community groups to create a new banner and sign that aims to raise awareness of the school. The artwork has been approved and is in production. We hope to improve our visibility in the village and encourage new students to join us. c

Year 6 Activity Day

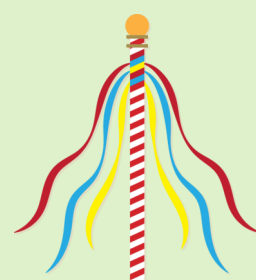
Year 6 had a wonderful (if damp!) activity day where they did archery and kayaking at Mallards Pike.

Thank you to Chris Powell and also Mrs Gilmour (Chair of St Briavels PTA, who volunteered for the day to accompany everyone!).



Maypole Storage

We are looking for someone to store our maypole, as it is currently taking up room in the church - please does anyone have a garage we can tuck it away in for now? If you would like to have a look at it please do ask.



Japanese Themed Week



The governors were successful in obtaining a grant from the Japan Society for a project that fulfils their aim to raise awareness of Japanese culture during the year of the Tokyo Olympics. The PTA and the Friends of Redbrook are also contributing to and supporting the project.

The centrepiece of the week will be a performance on Thursday by the 1000 Cranes Theatre Company of a piece based on Tales of Old Japan. During the week the children will make origami cranes - Orizuru - using authentic Japanese paper. The crane has great significance as a symbol of peace. They will hear Japanese tales told to them by Chika Yamagato, a member of staff who will also talk about her childhood in Japan, Haiku poetry workshops from governor Mike Haines and a 'show and tell' about customs and religions with Japanese artefacts by Brian Bocking, a retired professor of oriental studies.

The children's paper cranes, together with poetry, art work and stories, will be arranged as displays - first for parents to enjoy and then during the Summer for the village shop windows in St Briavels and Redbrook. Some paper cranes will be sent to the Children's Peace Monument in Hiroshima (you can look up more about this on the website).

Free School Meals



If you think you may qualify for free school meals please do apply for them—our school will receive extra funding for each eligible child registered. More details are attached.

Check to see if your child is eligible using the confidential online portal available at:

www.gloucestershire.gov.uk/freeschoolmeals



Job Vacancies

Jamie's Farm have asked us to publicise a job vacancy for them as they would love to employ someone from the local community. The full advert is attached.



Jamie's Farm needs a Lead Housekeeper

We are seeking a capable lead housekeeper to play a crucial role, ensuring all our guests have a fantastic experience when staying at Duffields Farm. It is a great opportunity to join a friendly and dynamic team and to make a difference on behalf of an exciting charity. Jamie's Farm is a charity working with young people who are at risk of social and academic exclusion, helping them to thrive and improve the way in which they are engaged in education.

Location: Duffields Farm, Redbrook, Monmouth, Monmouthshire, NP25 4LU
Deadline for applications: 9am Friday 11th June
Start date: Monday 12th July 2021 (or earlier if this is possible)

To Apply: Please submit a covering letter explaining your suitability and passion for the role, as well as your CV, to:

jopowell@jamiesfarm.org.uk



Bikeability Instructor Vacancy Forest of Dean

- Are you looking for a job that fits around school hours?
- Are you interested in cycling and sustainable travel?
- Do you have experience of coaching, teaching or working with children and young people (paid or voluntary)?

Think Travel and Gloucestershire County Council are looking for a **Bikeability Instructor** to join our team delivering cycle training to school children between the ages of 9 and 13. All training is provided including a nationally recognised **Level 2 Cycling Instructor qualification**.

We welcome applicants from people who live in or are able to travel to the **Forest of Dean area** and are available to work **term time and during school hours**. Pay is £12 per hour (includes holiday pay) and both car and cycle travel expenses are paid from your home to schools.

For more information on Bikeability follow this link <https://bikeability.org.uk/bikeability-training/>

To apply please send a C.V. and a brief covering letter outlining your suitability for the role to

thinktravel@gloucestershire.gov.uk



Give Ofsted your view on your child's school

Please do fill in quick survey giving your feedback about the school here:

<https://parentview.ofsted.gov.uk/>

Thank you!

Forest Foodbank

Please be aware that the Forest Foodbank is still operating. Individuals or families in need can find out how to access food by visiting the website at:



<https://theforest.foodbank.org.uk/>

Adult Education In Gloucestershire



Adult Education in Gloucestershire is continuing to run **Wellbeing Courses** to support families across the county including:

- **Happier and Calmer: Wellbeing at Home**
- **Get Crafty and Relax**
- **Writing for Wellness**
- **Calming the Mind**

All course are being delivered via Zoom and are free to people over 19 years old, who have lived in the UK/ EU for 3 or more years, or have a valid Residence Permit, and are one of the following: Unemployed or earning below £17,000 per year; Qualified below a Level 2 (less than 5 GCSEs); Have mental health challenges, Have a learning difficulty or disability.

For more information see:

<http://www.gloucestershire.gov.uk/adult-education-in-gloucestershire/>

Courage Compassion Respect Resilience

www.wyeforestfederation.co.uk

parentview.ofsted.gov.uk

Influence travel for young people in Gloucestershire

Gloucestershire County Council are carrying out a survey regarding the travel needs of young people in Gloucestershire. Positive changes to travel and transport, will improve young people's access to current and future career options, as well as education and leisure opportunities.



Please encourage young people to access the survey, participants will even have the chance to win one of four vouchers up to £50 in value!



The link to complete the survey is:

<https://www.smartsurvey.co.uk/s/>



A466 ROADWORKS DELAYED FOLLOWING ROCK FALLS

Following a potentially dangerous rockfall on the site on Friday 21st May the A466 roadworks have been delayed until the 11th June (subject to change).

A spokesperson for Monmouthshire County Council said: "This decision has not been taken lightly and we appreciate the disappointment and frustration this will cause among residents and businesses in Tintern and the surrounding area. However, the need to protect the safety of motorists and cyclists is paramount. Our immediate and ongoing priority remains to make the A466 safe, not just in the short term, but longer term. We'll be discussing the matter further with the contractors later this week but at this stage we hope to reopen the A466 by 11th June. We will provide a further update at the end of this week."

To find out more see:

[Monmouthshire.gov.uk/a466](https://www.monmouthshire.gov.uk/a466)

Courage Compassion Respect Resilience

www.wyeforestfederation.co.uk

parentview.ofsted.gov.uk



TERM DATES For May—October 2021

Last day of term	Friday 28 th May
Bank Holiday	Monday 31st May
INSET	Monday 7th June
First day of term	Tuesday 8th June
Last day of term	Wednesday 21st July
INSET	Thurs/Fri Sept 2/3rd
First day of term	Monday 6th September
Last day before half term	Friday 22nd October
First day after half term	Monday 1st November

Dates for your diaries

Please also see website and letters home for updates. Some events may be changed according to COVID regulations.

Monday 7th June	INSET day
Wednesday 30th June (<u>provisional</u>)	Sports day (<u>provisional</u>)
Wednesday 7th July (<u>provisional</u>)	Reserve sports day (<u>provisional</u>)
Dates to be confirmed	Japanese week
Please note: The Year 4/5 PGL trip scheduled for May 2021 will now take place in April 2022	

Courage Compassion Respect Resilience

www.wyeforestfederation.co.uk

parentview.ofsted.gov.uk