

St Briavels Primary School

Newsletter

Striving Together To Be The Best We Can Be



No. 74, 23rd October 2020

Dear All,

Thanks for your cooperation this term with all the measures we have needed to take to ensure the continued safety of our school community. I really appreciate your support and am pleased to report that we have managed to remain free from Covid-19 so far. I am aware that it continues to be a significant risk and we will continue to maintain our enhanced cleaning procedures, handwashing routines, separation of classes and social distancing measures. Despite the different approach we have had to take, it has been fabulous to have the majority of our children in school and learning. We have assessed the gaps and teaching has been addressing this whilst covering our planned curriculum. Our children are remarkably adaptable to the new routines and this is now 'normal'.

We are planning to go ahead with our parents meetings as previously planned, although this is now going to be remotely. We will offer a virtual meeting or telephone call during the week beginning 9th November. This will be an opportunity for you to ask any questions and for your child's class teacher to let you know where they are with their learning. Further details will be shared in the first week back in school after the break (or any 'possible circuit-breaker'). This is an important part of our relationship with you and if you feel that there are any difficulties that this may cause you then please get in touch with your child's class teacher so we can work to ensure you are able to access this 'meeting'.

As the seasons change and it gets colder we are hoping to be able to provide hot meals most days during the next term. A new menu will be available on Parentpay as soon as we have it available. Please don't forget, if you think you may be eligible for free school meals, please apply here: www.gloucestershire.gov.uk/freeschoolmeals. Even if your child receives free school meals during the Reception and KS1 years as part of the universal offer of free school meals, if you are in receipt of benefits you may be eligible to claim free school meals which gives the school additional funding to support your child's learning. We would strongly encourage you to please do this. Thanks.

Our enquiry learning is going well and our questions will be the same as we continue to explore them over a longer period of time. This is to enable us to go deeper into the learning without being rushed. Our children are enjoying finding out and are inevitably, coming up with more questions!

It is obviously now the time to start thinking about hats, scarves and gloves and we ask that you please label all these items with your child's name so that we can reunite any lost items with their rightful owner. If you don't have time for sewing nametapes, please use a sharpie or even a biro! There is nothing more frustrating than losing warm clothes when it's cold outside.

I continue to keep a close eye on the news and will keep you posted should there be any further developments. Try to enjoy the break, rest and relax if at all possible. Take care everyone.

**Sarah Helm, Executive Head Teacher,
The Wye Forest Federation**

Courage Compassion Respect Resilience

www.wyeforestfederation.co.uk

parentview.ofsted.gov.uk

After School Club

Please be aware that if there isn't any more uptake for the **Friday** After School Club this will discontinue from January. We need more children to attend on Friday to enable the club to break even, so please use it if you don't want to lose it! Thank you!

PGL—Years 4 and 5

Please note that the year 4 and 5 PGL has been rebooked at Liddington for 4 & 5th May 2021 (all being well). Anyone who wasn't here for the initial booking will be added to Parentpay before half term so that they can make payment.

Thank You



for your Kindness

THANK YOU!

We would like to say a BIG thank you to local tree surgeon, Steve Jones, who kindly came to make the tall poplar tree at the top of our school field safe again, without any charge to the school – such a lovely gesture. Thanks!

Sunflowers Parents of Children due to start school in September 2021

Gloucestershire County Council are preparing paperwork to send to you in mid-November which will explain the application process. If you have not received a pack from them by December, please contact the Co-Ordinated Admissions team on **01452 425407**.

Primary School Applications for 2021

If your child was born between **1st September 2016 and 31st August 2017** they can start school in the school year starting 1st September 2021. You need to apply for a place by 15th January 2020.

To find out more and apply go to:

<https://www.gloucestershire.gov.uk/schooladmissions/>

Due to the current COVID-19 situation, all the School Admissions Team have to adapt to working within the strict guidelines set by the government so there will be a reduced team available to answer phone calls. Please email school.admissions@gloucestershire.gov.uk with any queries, and they will reply as soon as they can.

Please pass this on to anyone you know who may be interested! Thank you!

Courage Compassion Respect Resilience

www.wyeforestfederation.co.uk

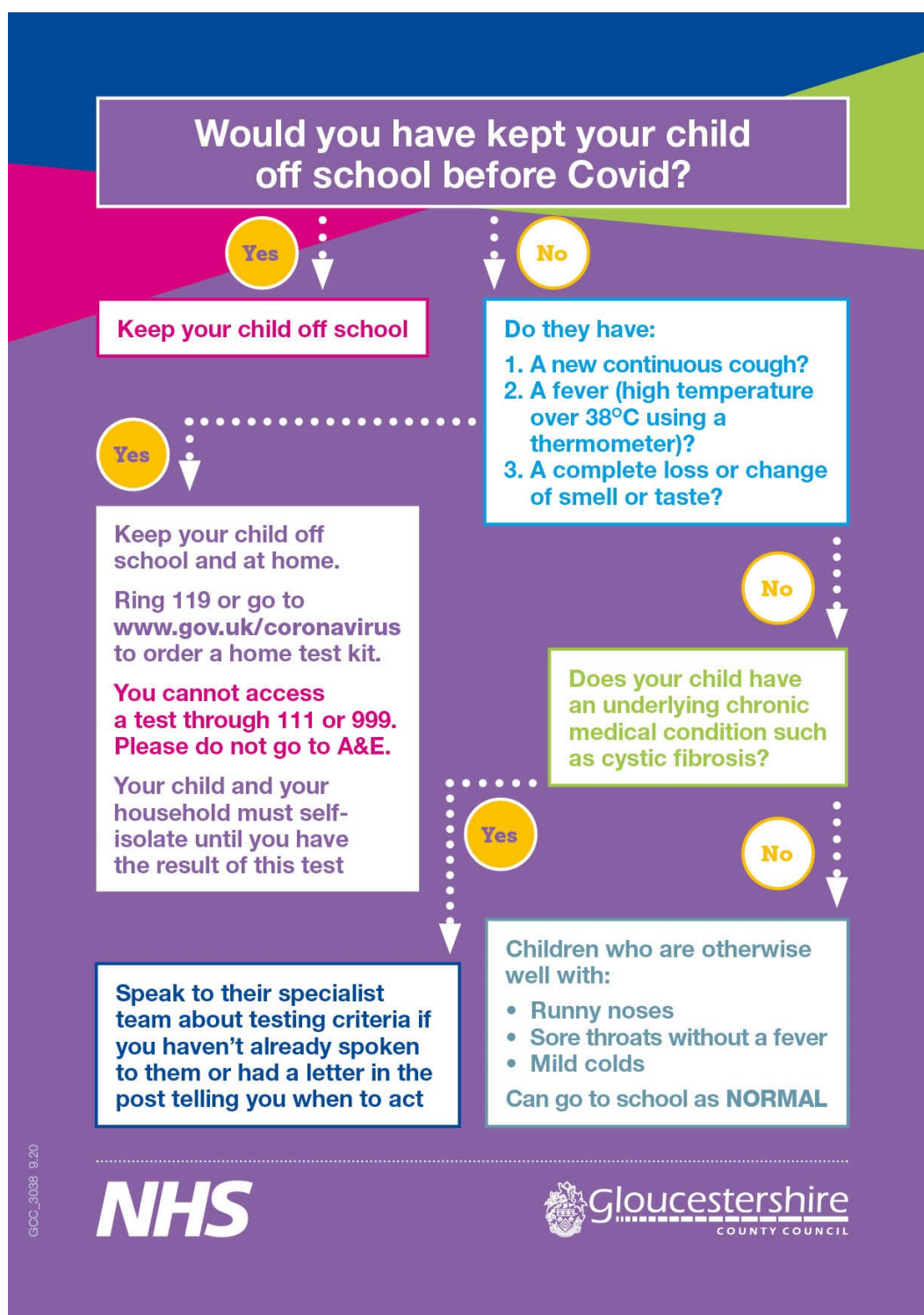
parentview.ofsted.gov.uk

COVID NEWS

- Our Blended Learning Strategy is now on the website. This explains how we provide teaching for your child if your child needs to stay at home due to Covid. You can read more about it under 'COVID' in the main menu, or go to:

https://www.wyeforestfederation.co.uk/web/blended_learning_during_covid/517244

- Please be vigilant for symptoms of a high temperature, a new **continuous** cough or a loss of the sense of smell or taste. Please let the school know asap If your child has tested positive. Thank you.





YEAR 1 children: Ellwood Youth Football Club needs you!

Ellwood Youth Football Club are a non profit, Voluntary Organisation, they have been running 6 years, and have children from all over the Forest of Dean. They try to help as many children and parents as they can, especially with these uncertain times, it brings some well needed distraction, great for making new friends, and great form of exercise.

They have a new group with limited spaces for Year 1 starting
Tuesday 27th October
5.30pm-6.30pm
at Lydney Leisure centre.

To find out more call Jason on **01594 837733**

Angel Hunt!

Deb Orriss, Pioneer Evangelist, Gloucester and Forest Centre of Mission, is organising an Angel Hunt (no, not a Bear Hunt!)

During December there will be some knitted angels hiding in the shops in Coleford for you to find. There will be prizes for whoever finds the most, and look out for the Angel Record Sheet which will be sent out in November for you to fill in.

Happy hunting!



Please give feedback about the school at: <https://parentview.ofsted.gov.uk/>

Courage Compassion Respect Resilience

www.wyeforestfederation.co.uk

parentview.ofsted.gov.uk

PTA NEWS

Following on from the AGM on 1st October and the Zoom meeting this week there's a new PTA team on the block! We are pleased to announce that after a short break, Claire Gilmour is back for a third term in office as PTA Chair with Ellen Rule as Vice Chair, Helen Banner as Secretary and Kelly Sheen as Treasurer.

We're busy getting ourselves in working order setting up the PTA section of the main WFF website; sorting the second hand uniform stocks; reading up on the guidelines around events in the current climate and all the admin that goes with a new committee.

The PTA isn't just about fundraising though. As a committee we are thinking about how we can support building a sense of community for families who are part of our school, and how the activities we plan can support health and wellbeing at a time when this is more important than ever.

We held a Zoom meeting this week to welcome new families and catch up with old. We discussed ideas we've floated for this term; what we'd like to concentrate our fundraising efforts on and how we're planning on fundraising during the pandemic. The minutes will be available shortly for anyone who couldn't attend.

Although we are a new committee, we've wasted no time getting out of the starting block:

- We set the ball successfully rolling when last month, thanks to everyone's donations we raised almost £200 with our **Rags2Riches** collection! Next collection will be in **April**.
- The teachers have had fun spending the vouchers we've all helped raise during the **Schloastic book fairs** that we drive everybody mad to attend! About £900 worth of reading books arrived at school last week.
- If you use **Amazon** we are now registered with **Amazon Smile**. Log on to your account through smile.amazon.co.uk, pick St Briavels School Association as your chosen charity and they will donate 0.5% of your purchase amount. If you're shopping through the site anyway please do join this scheme.
- After **Year 6 pupil Jared** approached us with his idea as to how he could raise funds for new goal posts (selling his renowned and delicious bakes!) we used some top PTA detective skills and our contacts and working with the school, sourced replacements. We're now planning a working party to get them up and Jared will be catering for the gang on the day. I can't imagine it'll be hard to find volunteers with that incentive! More details on how to help with this to follow....

We'd love to get stuck back in ASAP and organise some fun stuff for the kids (I know they've all missed their PJ parties, cake sales, talent shows etc!) so events we have on the table include:

- An Escape Room Game for KS2 (in class bubbles)
- A Village Treasure Hunt for all
- Festive Crazy Hair/Outfit Day in conjunction with the Christmas Raffle donations
- Class bubble Christmas film parties

Continued overleaf....

PTA NEWS continued...

We'll still need your help with these events but it'll be more behind the scenes and in the preparation due to the current climate.

Please get in touch with any PTA questions or suggestions – we do hope you'll want to get involved. We're ALL part of the PTA and the more we put in to it, the more we all get out of it – the children, the families, the teachers and the staff!

Your PTA team

Claire, Ellen, Helen and Kelly

Email: pta@st-briavels.gloucs.sch.uk



Schloastic books arrive in Poppy Class and a thank you card from Sunflowers for theirs!



Rags2Riches collection!

Courage Compassion Respect Resilience

www.wyeforestfederation.co.uk

parentview.ofsted.gov.uk

PLEASE NOTE: Due to Covid many of our planned events have been cancelled or are at risk of being cancelled/postponed. Please check the website and your emails for updates.



October—December Term 2020 — St Briavels Primary School

Please check website for updates!

Day	Date	Class	Event
Friday	23/10/20		LAST DAY OF TERM
HALF TERM HOLIDAY			
Monday	2/11/20	INSET DAY	INSET DAY
Tuesday	3/11/20		FIRST DAY OF TERM
Wednesday	4/11/20		
Thursday	5/11/20		
Friday	6/11/20		
Monday	9/11/20		Virtual parents evenings —on phone or online details tbc
Tuesday	10/11/20		Parent / teacher evening meetings—will be online, details tbc
Wednesday	11/11/20		Parent / teacher evening meetings—will be online, details tbc
Thursday	12/11/20		Parent / teacher evening meetings—will be online, details tbc
Friday	13/11/20		Parent / teacher evening meetings—will be online, details tbc
Monday	16/11/20		
Tuesday	17/11/20		
Wednesday	18/11/20		
Thursday	19/11/20		
Friday	20/11/20		
Monday	23/11/20		
Tuesday	24/11/20		
Wednesday	25/11/20		
Thursday	26/11/20		
Friday	27/11/20		

Courage Compassion Respect Resilience

www.wyeforestfederation.co.uk

parentview.ofsted.gov.uk



November 2020 — January 2021 — St Briavels Primary School

Please check website for updates!

Day	Date	Class	Event
Monday	30/11/20		Christmas Decorating
Tuesday	1/12/20		
Wednesday	2/12/20		
Thursday	3/12/20		
Friday	4/12/20		
Monday	7/12/20		Nativity Performances 2.30pm and 6pm - TBC
Tuesday	8/12/20		
Wednesday	9/12/20		
Thursday	10/12/20		
Friday	11/12/20		
Monday	14/12/20		
Tuesday	15/12/20		
Wednesday	16/12/20		
Thursday	17/12/20		
Friday	18/12/20		LAST DAY OF TERM
HOLIDAY			
Monday	4/1/21		FIRST DAY OF TERM
Tuesday	5/1/21		
Wednesday	6/1/21		
Thursday	7/1/21		
Friday	8/1/21		

COVID....If anyone in your family has symptoms please let us know and follow government guidelines re: isolating. The whole family needs to stay at home, more information can be found online at

<https://www.gov.uk/government/publications/covid-19-stay-at-home-guidance>

Courage Compassion Respect Resilience

www.wyeforestfederation.co.uk

parentview.ofsted.gov.uk